

# moon

by mac stopa for TONON

Mac Stopa è fondatore, architetto e designer di Massive Design, un prestigioso studio di architettura specializzato in interior design, design industriale e decorazione. Mac Stopa ha creato interni aziendali e mobili esclusivi per molte multinazionali tra cui Google, Ericsson, Samsung, Astra Zeneca, ING, Credit Suisse, BNP Paribas e Microsoft. Oltre per il corporate interiors, Mac Stopa è noto anche per lo sviluppo di prodotti innovativi nel settore della grafica e del design di mobili. I suoi prodotti sono caratterizzati dalla combinazione di linee essenziali e forme uniche ma anche di funzionalità e design moderno.

Mac Stopa is the founder, chief-architect and designer of Massive Design, an awarded architectural studio specialized in interior design, industrial design and decoration. Mac Stopa created corporate interiors and exclusive furniture for many multinational companies including Google, Ericsson, Samsung, Astra Zeneca, ING, Credit Suisse, BNP Paribas and Microsoft. Besides the corporate interiors, Mac Stopa is also known for the development of innovative products in the graphic design sector and furniture design. His products are characterized by the combination of essential lines and unique shape but also of functionality and modern design.

**Tonon 100% made in Italy**

Since 1926 Tonon is a well-known international brand in the world of seating, reliable and synonymous with design and quality MADE IN ITALY. Characterizing features that come from the past: their origins date back to the twenties, include years of careful and creative manufacturing. Even after the industrialization of the fifties, the pleasure of thinking and making never ended. Tonon today bases itself on research and development, on new materials and technologies, with a craftsman's heart and an industrial mind.



**Tonon & design**

Behind every product stays a face. Important international architects are developing together with us proposals for the domestic and commercial markets. Professional people with different cultural backgrounds create our seating collections with great aesthetic and functional sensitivity and this in harmony with the declared Tonon philosophy: to present products for international markets.



**Tonon & customized products**

In parallel to the organization of the standard production, in Tonon we have a team which responds to the continuous and increasing demand of customized products, especially in the HORECA business (hotels, restaurants, cafeterias). Tonon is able to collaborate efficiently with the customers and with the design studios, creating new product versions.



**Tonon & customers**

Tonon customers are all over the world. Our sales office and our export managers are doing the best to assist our customers.



**Tonon & environment**

We are proud to be energy independent: with our solar energy system we are producing as much energy as we consume, which in terms of environmental sustainability corresponds to an emission reduction of 123.000 kg. of CO2 per year.



**Casa&Soft a company of Tonon**

In 2011 Tonon added as satellite the company Casa soft. This company allows Tonon to get more and more involved in the soft seating. Specially for customized orders in the contract business, Tonon is now competitive also with their sofa products.



moon  
design: mac stopa

Per chi si è perso a guardare l'indicibile bellezza della luna, in ogni sua fase.

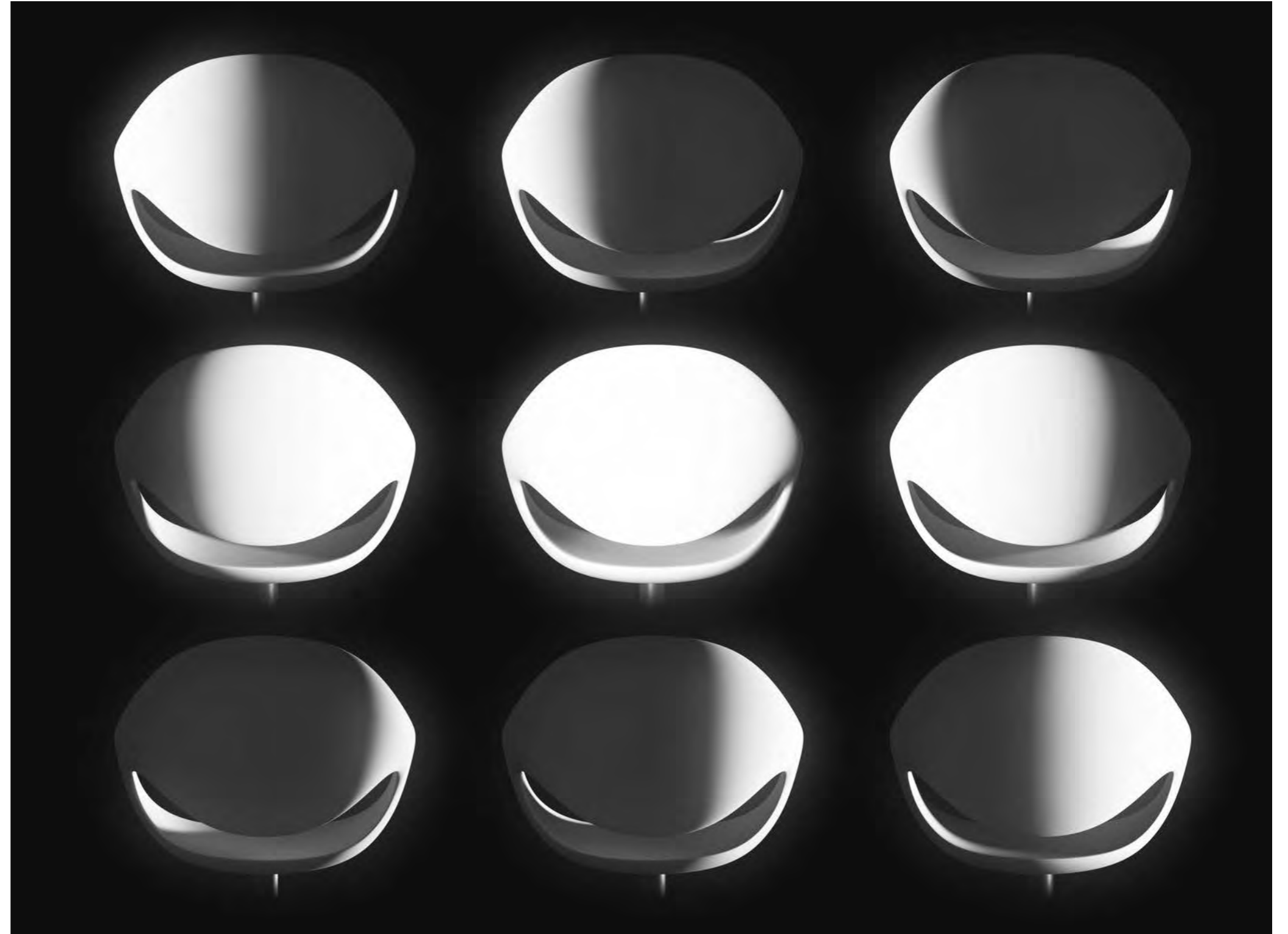
Per chi ha alzato lo sguardo, di notte, con occhi sognanti, viaggiando con la mente verso quel mondo lontano.

La luna, irraggiungibile e allo stesso tempo magnetica, è da sempre oggetto di poesie, storie, desideri.

For those who got lost looking at the unspeakable beauty of the moon, in every phase.

For those who looked up, at night, with dreamy eyes, traveling with the minds towards that distant world.

The moon, unreachable and at the same time magnetic, has always been the subject of poems, stories, desires.



# soft touch



908\_11



908\_L1



908\_B1



908\_C3   
908\_C5



908\_01



908\_A3   
908\_A5



908\_74



908\_81



908\_91





moon\_908.91



moon\_908.74



moon\_908.01

## moon organic design

La forma scultorea della sedia Moon di Mac Stopa per Tonon esprime la passione del designer per le linee curve e organiche. Lo schienale si fonde armoniosamente e diventa tutt'uno con i braccioli e con il sedile, creando uno spazio aperto tra schienale e sedile, a forma di mezzaluna: questo è ciò che la rende affascinante e unica .

The sculptural shape of the Moon chair by Mac Stopa for Tonon expresses the designer's passion for curved and organic lines. The backrest bends harmoniously and becomes one single piece with the rest of the shell, creating an open space between the backrest and the seat, in the shape of a half moon: this is what makes it fascinating and unique.





moon\_908.L1



moon\_908.81



moon\_908.74



moon\_908.11



moon\_908.B1



moon\_908.01



moon\_908.91



upholstered



908\_31



908\_L2



908\_B2



908\_E3 ○  
908\_E5 ○



908\_21



908\_D3 ○  
908\_D5 ○



908\_76 ○

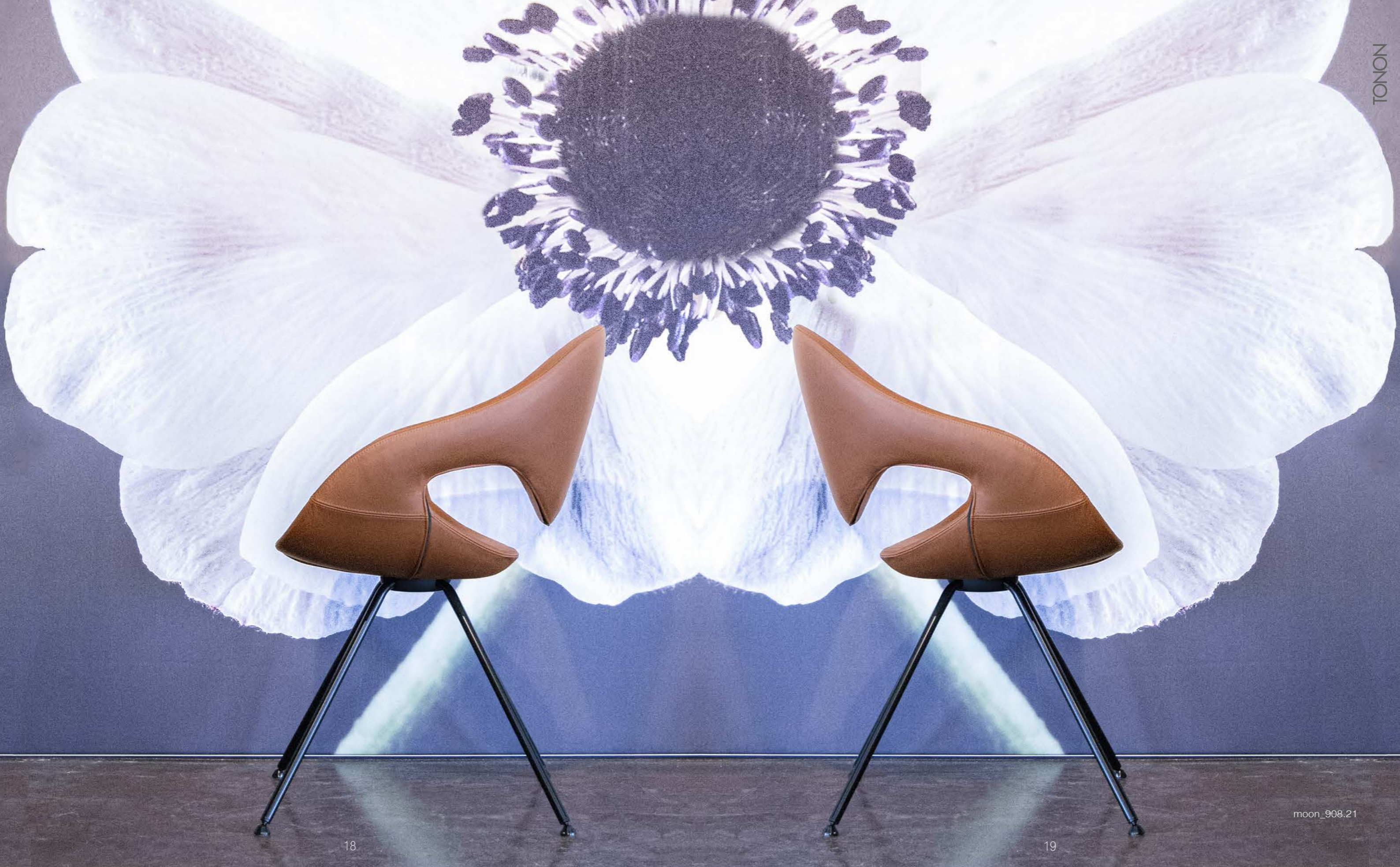


908\_82 ○



908\_92





## moon ergonomic design

La struttura della Moon, studiata con precisione, si adatta perfettamente alla posizione del corpo: sedersi diventa un piacere. La scocca dalla forma organica è realizzata anche in gomma flessibile imbottita in tessuto o pelle. La scocca adatta le sue linee alla forma del corpo e dona una piacevole sensazione di morbidezza per il massimo comfort.

The structure of moon, studied with precision, adapts perfectly to the position of the body: sitting becomes a pleasure. The organically shaped shell is also made in flexible injected foam upholstered with fabric or leather. The shell geometry adapts its lines to the shape of the body and gives a pleasant sensation of softness for a maximum comfort.



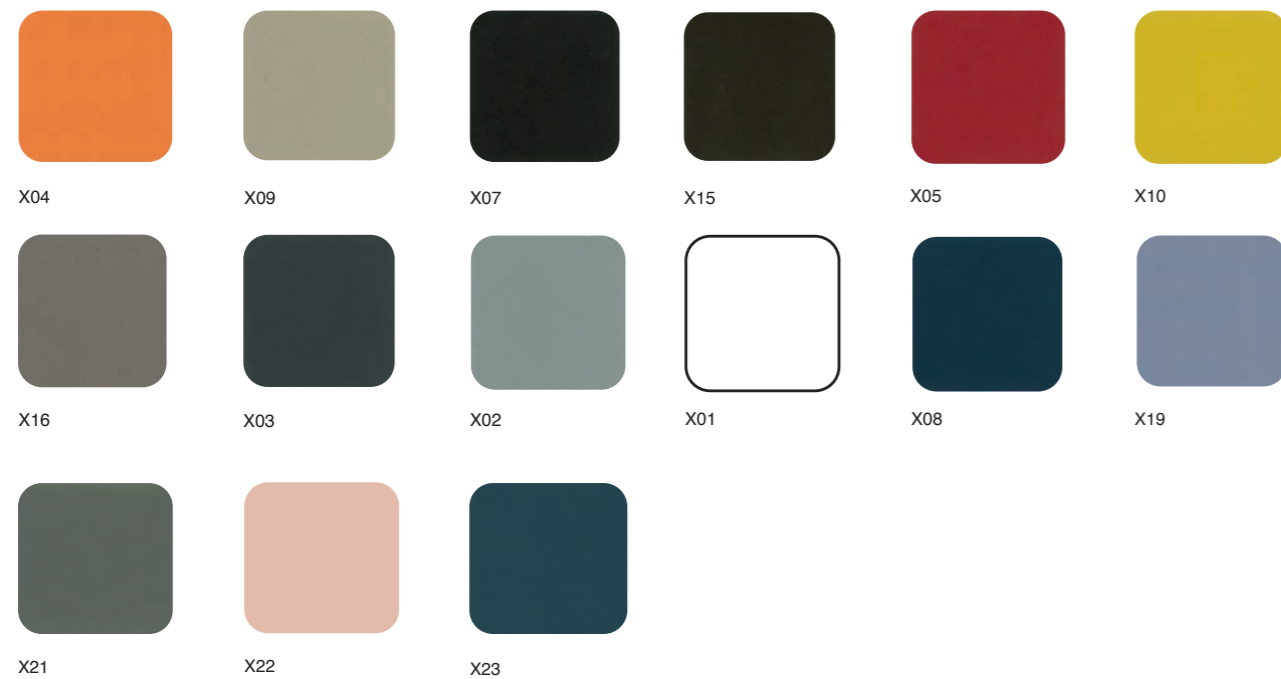


moon\_908.31



moon\_908.B2

SOFT TOUCH COLORS



SOFT TOUCH CERTIFICATIONS

The material used by Tonon for this collection satisfy the following regulation:

- Surfaces strength to cold liquids EN 12720/97
- Surfaces strength to cold liquids synthetic urine - quick-acting disinfection EN 12720/2013
- Colour strength to rubbing EN ISO 11640:1998
- Flame resistance 1.IM - BS CRIB 5 Cigarette test – CAL 117
- Surfaces strength to cleaning products PTP 53/95
- Ace bleach test, ammonia test (sol.10%), Baysan multipurpose, Lyso-Form for kitchen, Viakal, Vetril, Vim liquid, Cif multipurpose, Cif with bleach, Saniform 360
- Accelerated ageing through lamp UV ASTM G 154 -06

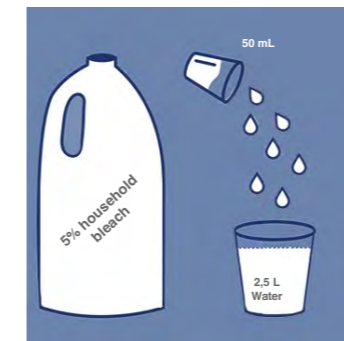
Official certifications available on request

Test by **CATAS**

MOON BLEACH-CLEANABLE\*

DISINFECTION OF THE “SOFT TOUCH COLLECTION” SUCCESSFULLY TESTED WITH A SOLUTION OF WATER AND 0.1% SODIUM HYPOCHLORITE.

With the measures prescribed in relation to the Corona virus, we are all facing new challenges. Hygiene measures have taken on a new importance. We all need to know who can protect us from viruses and bacteria. In the hotel and restaurant industry, this also includes sanitizing furniture. The new protocols for the restaurant and hotel industry prescribe sanitation after each guest and, if possible, to follow the recommendations of the World Health Organization. What is prescribed in the hospitality industry can also easily be carried out in everyday private life.



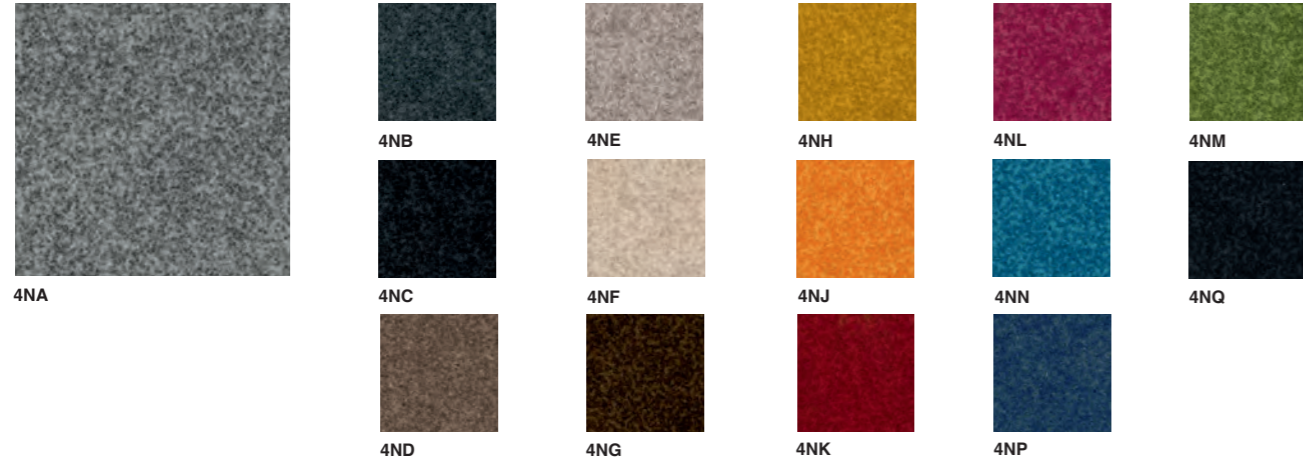
THE PROTOCOLS PRESCRIBE:

All surfaces must be cleaned with a solution of water and 0.1% sodium hypochlorite (the solution is formulated by adding 50 ml of 5% household bleach in 2.5 liters of water). The mixture formulated fights bacteria and germs, guarantees maximum cleaning and ensures that clean surfaces are sanitized.

WE TOOK UP THIS CHALLENGE AND TESTED OUR SOFT TOUCH COLLECTION WITH THIS FORMULA.

After 1000 cycles no changes were detected on the surface of the material and in the color. We are proud to inform you that the polyurethane used for “moon” facilitates quick and effective cleaning according to the most stringent sanitization protocols.

FABRIC\_NORDIC cat 4



Composition  
50% PES  
15% PA  
35% ACRIL

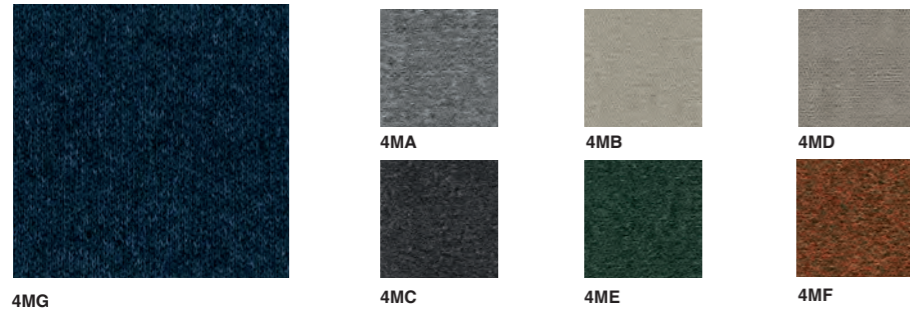
Weight  
410 gr/m2

Width  
140 cm

Abrasion test  
Martindale  
100.000

Light solidity  
6

Cleaning



Composition  
100% PES FR

Width  
140

Weight  
707 gr/m ± 5%

Seam slippage resistance  
EN ISO 13936/2  
WARP 1,7  
WEFT 2,5

Pilling resistance  
4-5

Abrasion test  
end point (A)/fully worn off (B)  
EN ISO 12947-2  
50.000 (A)  
change aspect 3000c  
EN ISO 12947/2 / EN 14465 / EN ISO 105-A02  
3-4

Lightfastness  
EN ISO 105-B02  
6-7

Acoustic  
PASS

Assessment of ignitability  
Cigarette test / Match test  
BS5852 0/1  
EN 1021 1/2  
BS7176 Low hazard  
CAL TB117  
NFPA 260  
BS5852 0  
EN 1021 1  
IMO Annex 1 Part 8  
UNI 9175 Clase 1.IM  
NF D 60 013  
DIN 4102 B2  
PASS

Colour fastness to rubbing  
EN ISO 105-X12.  
DRY 5  
WET 4-5

Dimensional change in domestic washing and drying  
EN ISO 3759 / EN ISO 6330 / EN ISO 5077  
WARP -3%  
WEFT -1,5%

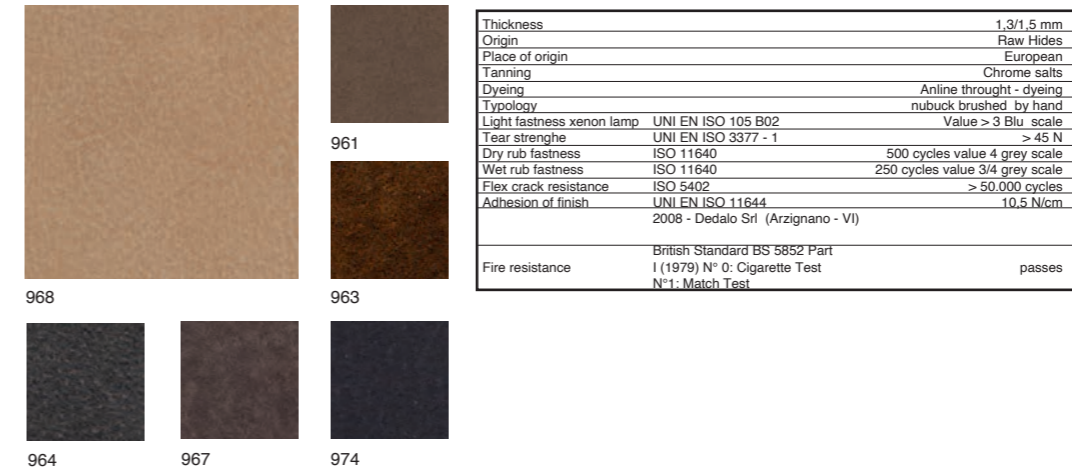
Cleaning

LEATHER\_POLO cat 7



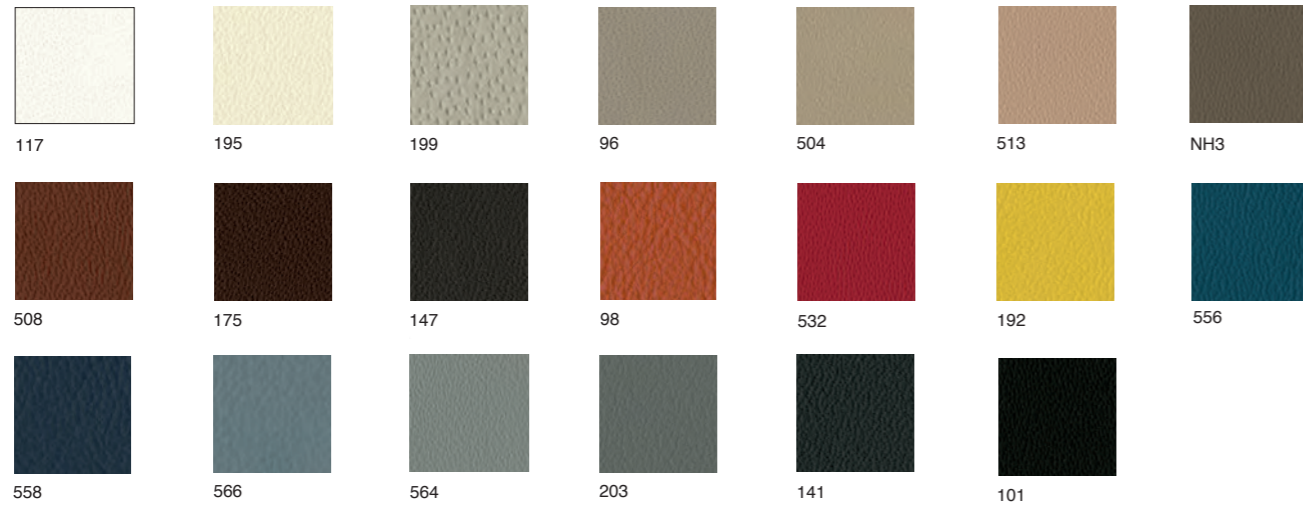
Thickness		0,9/1,1 mm	<b>Fire resistance</b> British Standard BS 5852 Part I (1979) N° 0: Cigarette Test N°1: Match Test passes  Imo FTP part 8-Resolution A652 (16) NI/0: Cigarette test NI/1: Match Test passes  TB 117-A11@2013:2013 Cigarette Test ( California) passes
Origin		Raw Hides	
Place of origin		European	
Tanning		Chrome salts	
Dyeing		Aniline through - dyeing	
Finishing		Pigments finishing	
Typology		Corrected grain	
Light fastness xenon lamp	UNI EN ISO 105 B02	Value > 8 Blu scale	
Tear strenghe	UNI EN ISO 3377 - 1	42 N/mm	
Dry rub fastness	ISO 11640	500 cycles value 4/5 grey scale	
Wet rub fastness	ISO 11640	250 cycles value 4/5 grey scale	
Flex crack resistance	ISO 5402	> 50.000 cycles	
Adhesion of finish	UNI EN ISO 11644 2008 - Dedalo Srl (Arzignano - VI)	9 N/cm	

LEATHER\_SAVANA cat 9



Thickness		1,3/1,5 mm
Origin		Raw Hides
Place of origin		European
Tanning		Chrome salts
Dyeing		Aniline through - dyeing
Typology		nubuck brushed - by hand
Light fastness xenon lamp	UNI EN ISO 105 B02	Value > 3 Blu scale
Tear strenghe	UNI EN ISO 3377 - 1	> 45 N
Dry rub fastness	ISO 11640	500 cycles value 4 grey scale
Wet rub fastness	ISO 11640	250 cycles value 3/4 grey scale
Flex crack resistance	ISO 5402	> 50.000 cycles
Adhesion of finish	UNI EN ISO 11644 2008 - Dedalo Srl (Arzignano - VI)	10,5 N/cm
Fire resistance	British Standard BS 5852 Part I (1979) N° 0: Cigarette Test N°1: Match Test	passes

LEATHER\_SOFT cat 9



Thickness	1,1/1,2 mm	
Origin	Raw Hides	
Place of origin	European	
Tanning	Chrome salts	
Dyeing	Aniline through - dyeing	
Finishing	Water - based pigments	
Typology	Grain slightly corrected	
Light fastness xenon lamp	UNI EN ISO 105 B02	Value > 4 Blu scale
Tear strenghe	UNI EN ISO 3377 - 1	> 28 N/mm
Dry rub fastness	ISO 11640	500 cycles value 4 grey scale
Wet rub fastness	ISO 11640	80 cycles value 5 grey scale
Flex crack resistance	ISO 5402	25000 cycles
Adhesion of finish	UNI EN ISO 11644	> 7,5 N/cm
	2008 - Dedalo Srl (Arzignano - VI)	

Fire resistance	British Standard BS 5852 Part 1 (1979) N° 0: Cigarette Test N°1: Match Test	Passa
-----------------	---	-------

Leather is a natural product, it quickly adjusts to the body temperature and is soft and comfortable.

Every hide is a unique specimen with special properties that are harmonized as much as possible during the tanning and dyeing process. Small scars, insect bites, folds or stains do not reduce the quality of the leather; they simply confirm this naturalness.

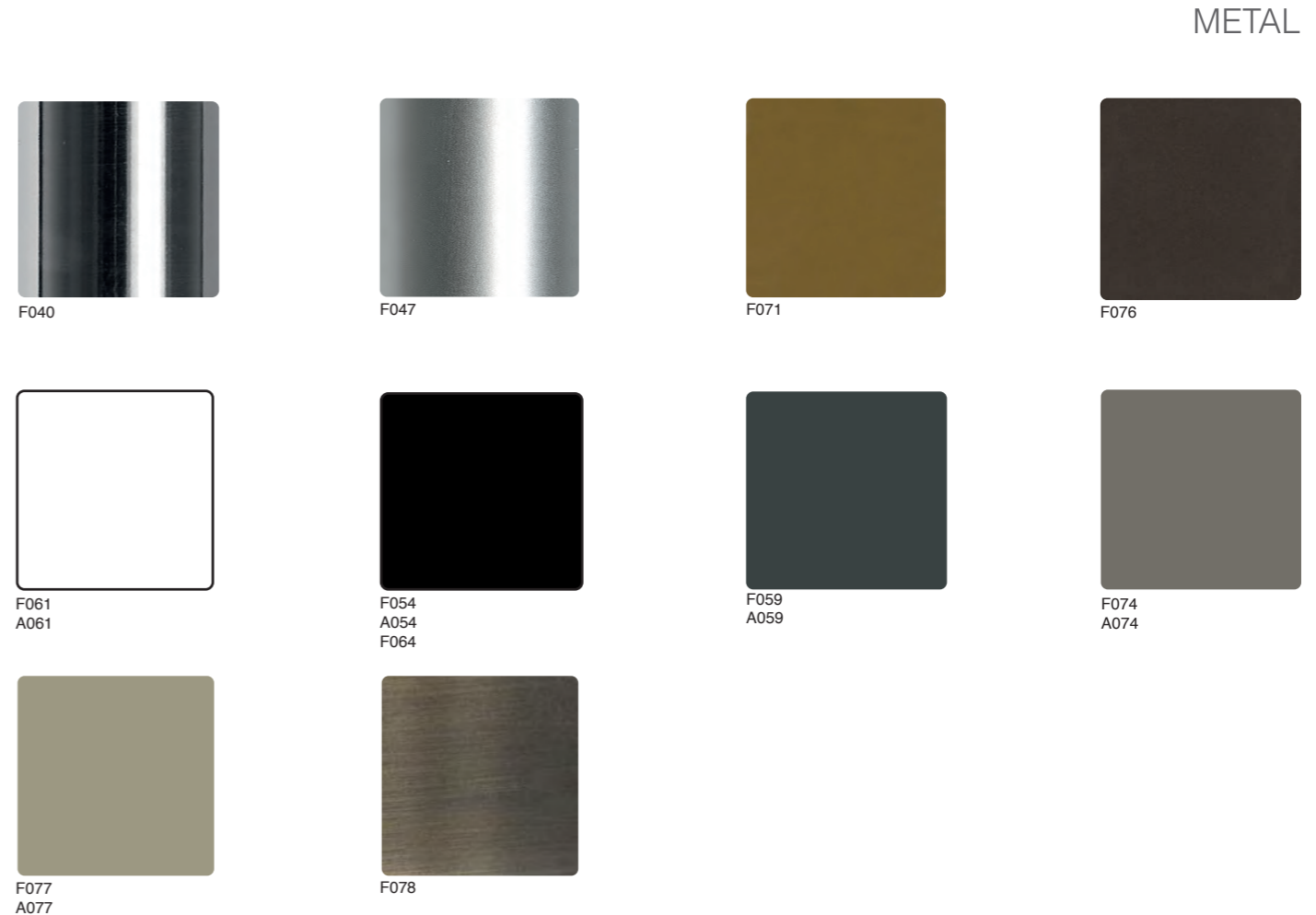
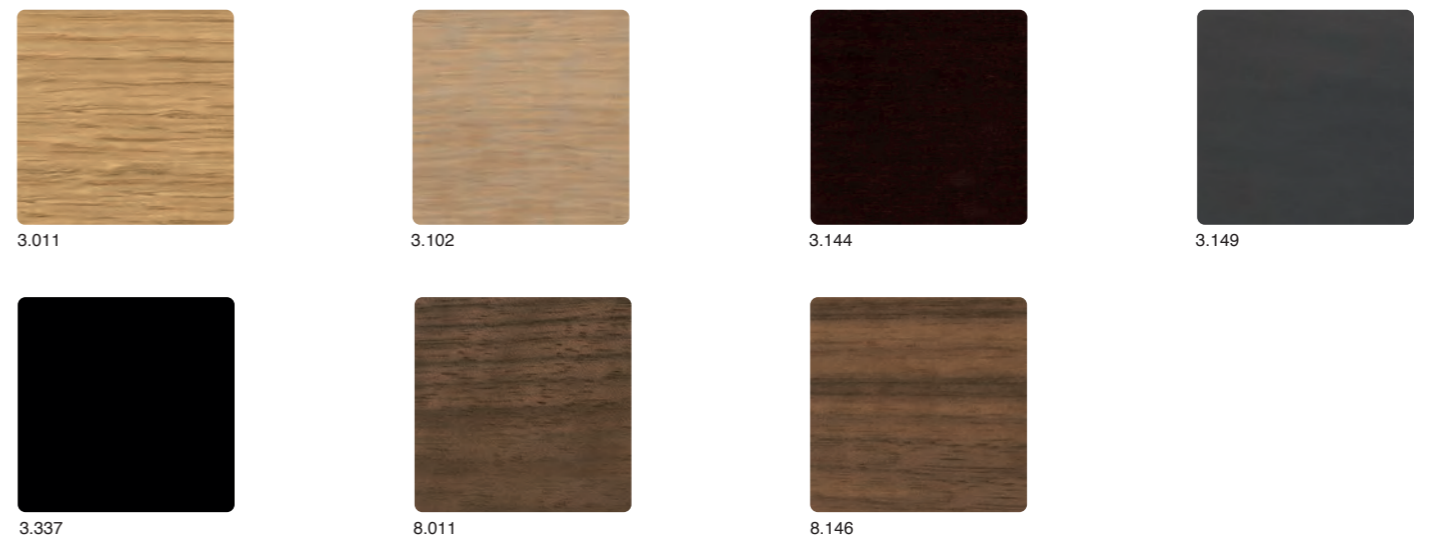
Tips for cleaning and care.

Dust the leather with a damp rag. Small stains or ballpoint pen marks can be removed with a transparent rubber eraser. Soak up liquids immediately with a soft rag and then wipe them off with a damp rag. It is best to use distilled water and mild detergent. You should treat the furniture with a leather care product occasionally.

Avoid aggressive cleaners. Please note that the colour of the leather may change over time if continually exposed to strong light; white leather is especially sensitive, this is not a material defect but a reaction of the natural product to strong light sources.

The chemicals needed for the production of leather, used for the tanning, the dyeing and finishing of the raw hides, do not contain substances which can be harmful for health or the environment.

Due to technical reasons it is not possible to guarantee the same tonality of colour from one bath to another.





Tonon spa si riserva il diritto di apportare quelle modifiche che ritenesse necessarie o migliorative ai propri prodotti. È vietata la riproduzione anche parziale di questo catalogo.

Tonon spa reserves the right to modify and improve its products when considered necessary without prior notice. It is strictly forbidden to copy and or reproduce this catalogue in full and or in part in any format.

Graphic project: Nicholas Macorig

Edition 1031120