

# FINISHES

---

**Finiture**  
**Materialien**  
**Finitions**  
**Acabados**

**arper**

Loop finishes

arper

Metalli  
Metals  
Métalle  
Métal  
Metal



LU1



S03

Pelle  
Soft leather  
Weichleder  
Cuir souple  
Piel



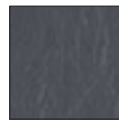
PF00001



PF00002



PF00008



PF00010



PF00003



PF00004



PF00005



PF00006



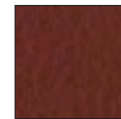
PF00007



PF00009



PF00011



PF00012



PF00013

Ecopelle 1  
Faux leather 1  
Kunstleder 1  
Similcuir 1  
Ecopiel 1





CHROME FREE  
 Pelle Elmosoft  
 Soft leather Elmosoft  
 Weichleder Elmosoft  
 Cuir souple Elmosoft  
 Piel Elmosoft

						
ES00100	ES00109	ES01003	ES01037	ES01040	ES01061	
						
	ES02020	ES02048	ES04012	ES04054	ES05007	
						
ES05011	ES06026	ES07032	ES07068	ES07075	ES08005	ES08017
						
ES11049	ES11054	ES12074	ES12080	ES13041	ES13053	ES13060
						
ES13064	ES13072	ES13078	ES17027	ES22030	ES33001	ES33004
						
ES35126	ES43031	ES44005	ES44026	ES44066	ES45016	ES45065
						
ES54035	ES55002	ES55148	ES57019	ES57349	ES66022	ES71017
						
ES76025	ES77030	ES77127	ES77158	ES78012	ES87088	ES88009
						
ES93068	ES93129	ES95006	ES95122	ES97038	ES98015	ES99999

No Stain



ZM00001



ZM00002



ZM00003



ZM00004



ZM00005



ZM00006



ZM00007



ZM00008



ZM00009



ZM00010



ZM00011



ZM00012



ZM00013



ZM00014



ZM00015



ZM00016



ZM00017



ZM00018



ZM00019



ZM00020



ZM00021



ZM00022



ZM00023



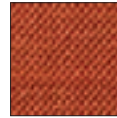
ZM00024



ZM00025



ZM00026



ZM00027



ZM00028



ZM00029



ZM00030



ZM00031



ZM00032



ZM00033



ZM00034

**kvadrat**

Cava 3  
(EU Ecolabel)



Kvadrat's Cava 3  
has been awarded  
the EU Ecolabel



**kvadrat**

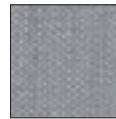
Clara



CL00744



CL00144



CL00148



CL00184



CL00188



CL00244



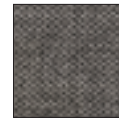
CL00248



CL00344



CL00348



CL00384



CL00388



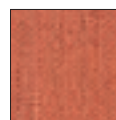
CL00444



CL00448



CL00544



CL00548



CL00584



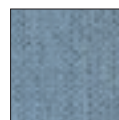
CL00588



CL00684



CL00688



CL00748



CL00784



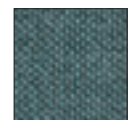
CL00788



CL00844



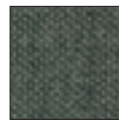
CL00848



CL00884



CL00888



CL00984



CL00988

**kvadrat**

Divina 3





**kvadrat**

Divina Melange 2



DM00170



DM00120



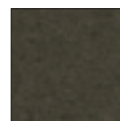
DM00180



DM00220



DM00260



DM00280



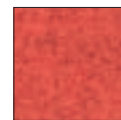
DM00421



DM00471



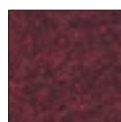
DM00521



DM00531



DM00571



DM00581



DM00621



DM00631



DM00671



DM00681



DM00721



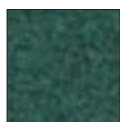
DM00731



DM00771



DM00821



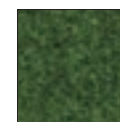
DM00871



DM00920



DM00931



DM00971

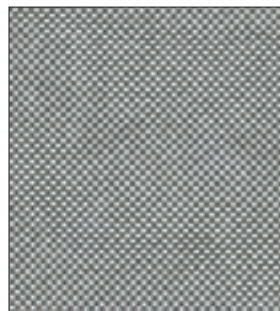
**kvadrat**

Divina MD



**kvadrat**

Field



FI00132



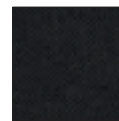
FI00142



FI00172



FI00182



FI00192



FI00222



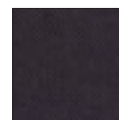
FI00232



FI00242



FI00252



FI00382



FI00432



FI00542



FI00642



FI00662



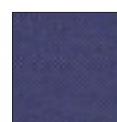
FI00682



FI00752



FI00762



FI00772



FI00782



FI00932



FI00942



FI00952



FI00972



FI00982

**kvadrat**

Flora 2



**kvadrat**

Hallingdal 65  
(EU Ecolabel)

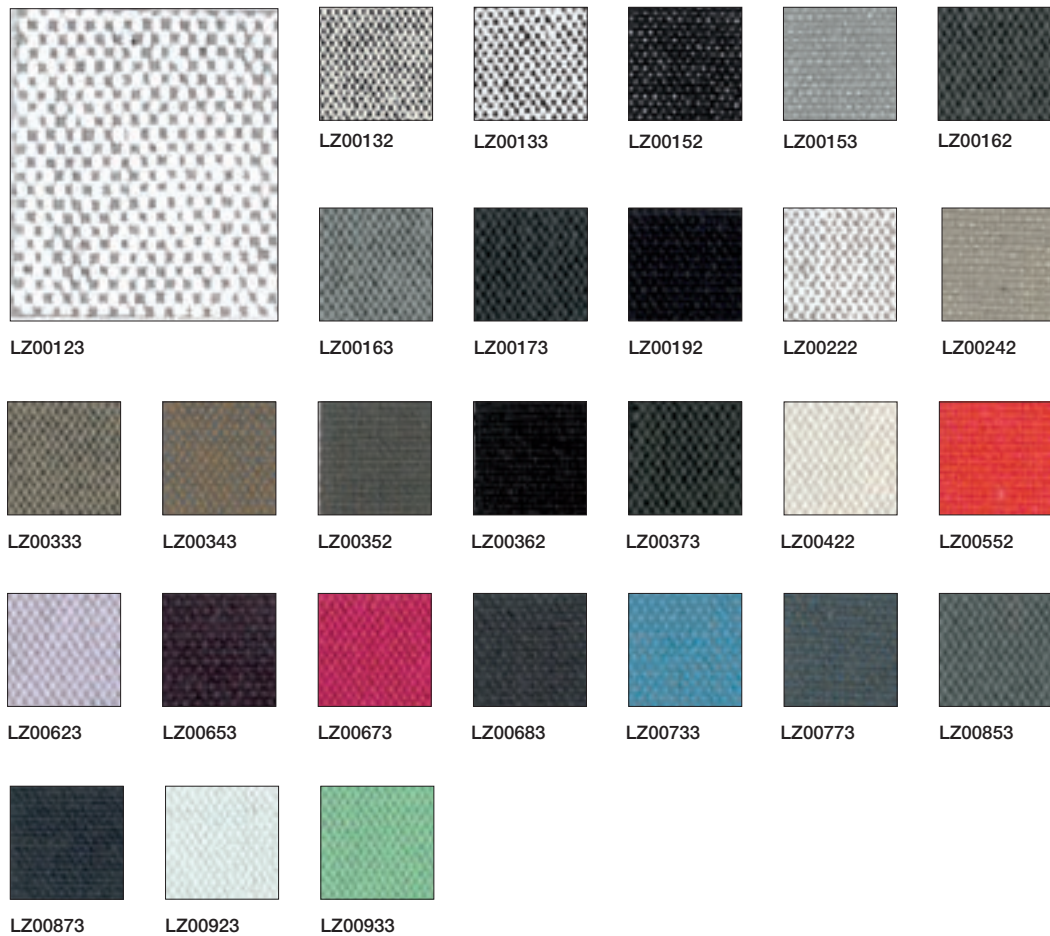


Kvadrat's Hallingdal 65  
has been awarded  
the EU Ecolabel

	HA00100	HA00110	HA00113	HA00116	HA00123	
HA00103	HA00126	HA00130	HA00143	HA00153	HA00166	
HA00173	HA00180	HA00190	HA00200	HA00220	HA00224	HA00227
HA00270	HA00350	HA00368	HA00370	HA00376	HA00390	HA00407
HA00420	HA00457	HA00526	HA00547	HA00563	HA00573	HA00590
HA00596	HA00600	HA00657	HA00660	HA00674	HA00680	HA00687
HA00694	HA00702	HA00723	HA00733	HA00750	HA00753	HA00754
HA00763	HA00764	HA00773	HA00810	HA00840	HA00850	HA00890
HA00907	HA00944	HA00960	HA00968	HA00980		

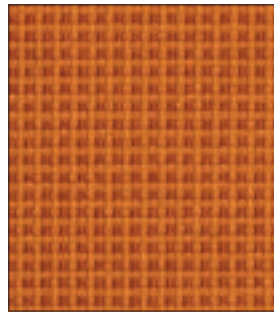
**kvadrat**

Lazio 2

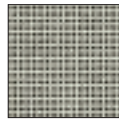


kvadrat

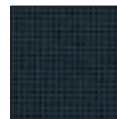
Pro 2



P200511



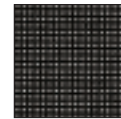
P200123



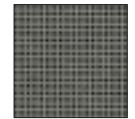
P200181



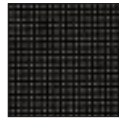
P200191



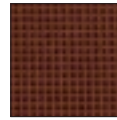
P200193



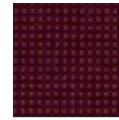
P200231



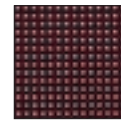
P200241



P200343



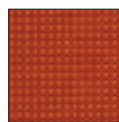
P200353



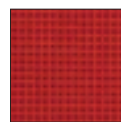
P200363



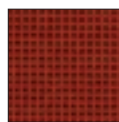
P200373



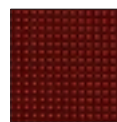
P200521



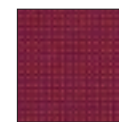
P200543



P200621



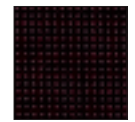
P200631



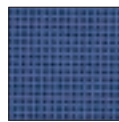
P200653



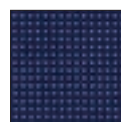
P200663



P200693



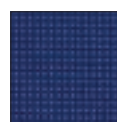
P200731



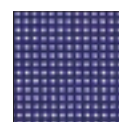
P200741



P200751



P200761



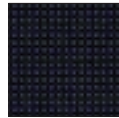
P200763



P200771



P200773



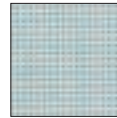
P200781



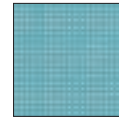
P200783



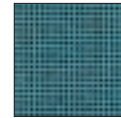
P200793



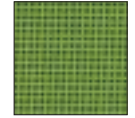
P200823



P200833



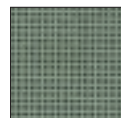
P200863



P200943



P200953



P200973



P200983

**kvadrat**

Remix 2  
(EU Ecolabel)



Kvadrat's Remix 2  
has been awarded  
the EU Ecolabel





**kvadrat**

Scuba



**kvadrat**

Steelcut Trio 2



**kvadrat**

Steelcut 2



**kvadrat**

Sunniva



**kvadrat**

Tempo



kvadrat

Tonus 3



**kvadrat**

Topas 2  
(EU Ecolabel)



Kvadrat's Topas 2  
has been awarded  
the EU Ecolabel



TO00124



TO00104



TO00134



TO00144



TO00156



TO00164



TO00174



TO00184



TO00186



TO00194



TO00204



TO00216



TO00226



TO00236



TO00304



TO00314



TO00324



TO00346



TO00366



TO00404



TO00414



TO00426



TO00446



TO00454



TO00464



TO00504



TO00514



TO00524



TO00536



TO00546



TO00604



TO00614



TO00624



TO00634



TO00644



TO00654



TO00664



TO00674



TO00684



TO00694



TO00704



TO00714



TO00724



TO00734



TO00744



TO00754



TO00756



TO00764



TO00766



TO00774



TO00784



TO00794



TO00796



TO00804



TO00814



TO00824



TO00834



TO00846



TO00904



TO00914



TO00926



TO00934



TO00944



TO00956



TO00966



TO00976



TO00986



Istituito nel 1992, il marchio comunitario di qualità ecologica o Ecolabel, il cui logo è rappresentato da un fiore, è uno speciale sistema di certificazione creato per aiutare i consumatori europei a scegliere prodotti e servizi più ecologici e più rispettosi dell'ambiente.

Established in 1992, the EU Eco-label "Flower" is a unique certification scheme aimed to help European consumers distinguish greener, more environmentally friendly, products and services.

Hinter der "Blume", dem 1992 ins Leben gerufenen EU-Umweltzeichen, steckt ein einzigartiges Zertifizierungssystem, das dem europäischen Verbraucher das Erkennen umweltfreundlicherer Produkte und Dienstleistungen erleichtern soll.

Établi en 1992, le label écologique de l'EU symbolisé par la "Fleur" est un système d'homologation unique destiné à aider les consommateurs européens à discerner les produits et services plus verts et plus favorables à l'environnement.

Creada en 1992, la etiqueta ecológica de la UE, también conocida como "la flor", constituye un sistema de certificación único, cuyo objetivo es ayudar a los consumidores europeos a identificar los productos y servicios más ecológicos y respetuosos del medio ambiente.

I colori visualizzati sono puramente indicativi e possono variare rispetto alla realtà. Rivolgersi ad Arper o al proprio rivenditore di fiducia per ricevere un campione colore o per maggiori informazioni.

Colours shown are used for reference only and may look different in reality. Please contact Arper or your retailer to receive a colour sample or more information.

Bei den angezeigten Farben handelt es sich um reine Farbbeispiele, die von der Realität abweichen können.  
Für Farbmuster und nähere Informationen wenden Sie sich bitte an Arper oder an den Händler Ihres Vertrauens.

La reproduction photographique des couleurs n'est que purement indicative et peut être différente de la réalité. S'adresser à Arper ou à votre revendeur de confiance pour recevoir un échantillon de couleur ou pour de plus amples informations.

Los colores visualizados son meramente indicativos y pueden diferir de la realidad. Para recibir una muestra del color o para más información, contactar a Arper o a su distribuidor de zona.

Arper SPA si riserva di apportare modifiche e/o migliorie di carattere tecnico ed estetico ai propri modelli e prodotti in qualsiasi momento e senza preavviso.  
Per maggiori informazioni visitate il sito [www.arper.com](http://www.arper.com)

Arper SPA reserves the right to make modifications and improvements of a technical or aesthetic nature to the products at any time without notice.  
For further information, please visit [www.arper.com](http://www.arper.com)