



The Place for Ideas



# LIGHT

Design by Luxy R&D

Leggerezza atemporale, frutto di maestosa professionalità. Light è la seduta che racconta gli oltre quarant'anni di storia Luxy, combinando bellezza, artigianalità e resistenza nel tempo. La lavorazione senza viti a vista ne fa un oggetto in grado di valorizzare l'ambiente nel quale è ospitata, rendendolo altamente sofisticato. La morbidezza delle linee e la cura estrema dei dettagli contribuiscono a creare un insieme completo e coerente nella sua esclusiva armoniosità.

Timeless and weightless, from the mind of a true maestro. Light envelops our 40 years of history into a single chair, combining beauty, artisanal skills, and durability. Crafted without visible screws, the chair embellishes any environment with its unabashed sophistication, while its soft lines and attention to details exude harmonious exclusivity.







**LIGHT**

Modelli 16090B, 18090B, 14090B, 14040S, 18040 e 16040/  
6090B, 18090B, 14090B, 14040S, 18040 e 16040 models





LIGHT

Modelli 18090B e 16090B/ 18090B and 16090B models



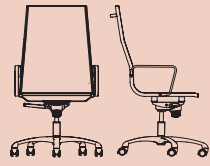




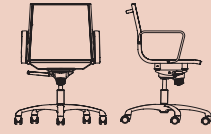
**LIGHT**

Design by Luxy R&D  
 Sedute direzionali/ Executive chairs

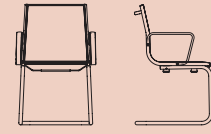
**14000**



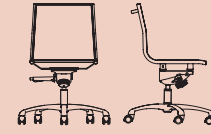
**14040**  
 L 67 x W 75 x H 107 cm



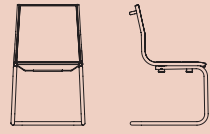
**14090B**  
 L 62 x W 60 x H 84 cm



**14080B**  
 L 58 x W 59 x H 84 cm

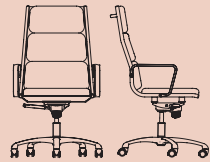


**14090**  
 L 62 x W 60 x H 84 cm

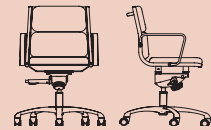


**14080**  
 L 50 x W 59 x H 84 cm

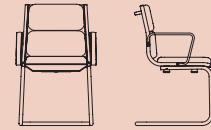
**18000**



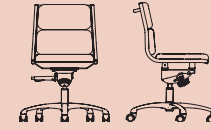
**18040**  
 L 67 x W 75 x H 107 cm



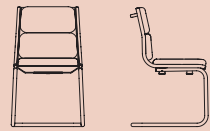
**18090B**  
 L 62 x W 60 x H 84 cm



**18080B**  
 L 58 x W 59 x H 84 cm

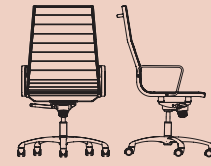


**18090**  
 L 62 x W 60 x H 84 cm

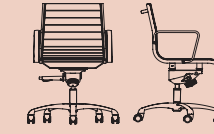


**18080**  
 L 50 x W 59 x H 84 cm

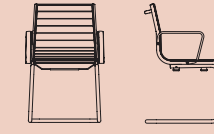
**16000**



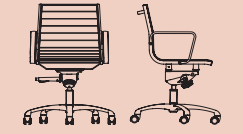
**16040**  
 L 67 x W 75 x H 107 cm



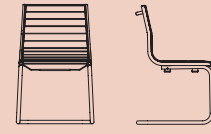
**16090B**  
 L 62 x W 60 x H 84 cm



**16080B**  
 L 58 x W 59 x H 84 cm

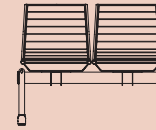


**16090**  
 L 62 x W 60 x H 84 cm

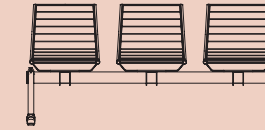


**16080**  
 L 50 x W 59 x H 84 cm

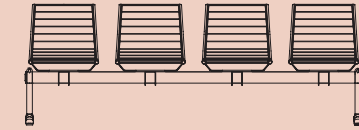
**Panche/ Beam**



**14000B 2P**  
 L 121 x W 62 x H 85 cm



**14000B 3P**  
 L 184 x W 62 x H 85 cm



**14000B 4P**  
 L 240 x W 62 x H 85 cm



**MATERIALI**

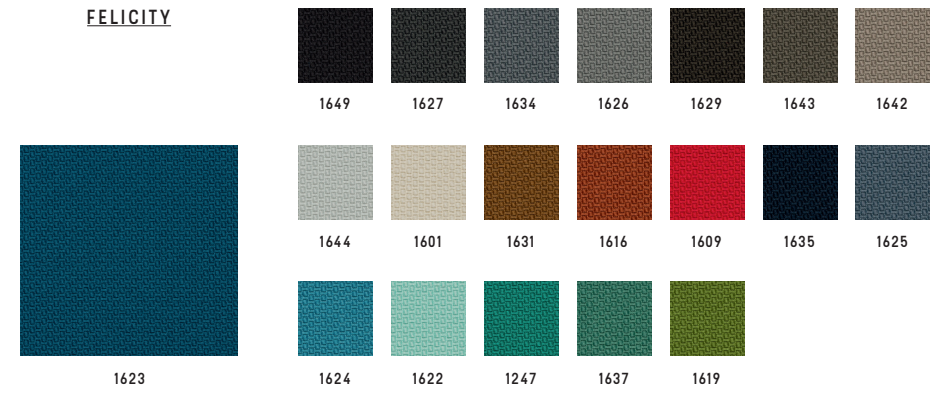
MATERIALI/ MATERIALS





**GABRIEL**

**FELICITY**

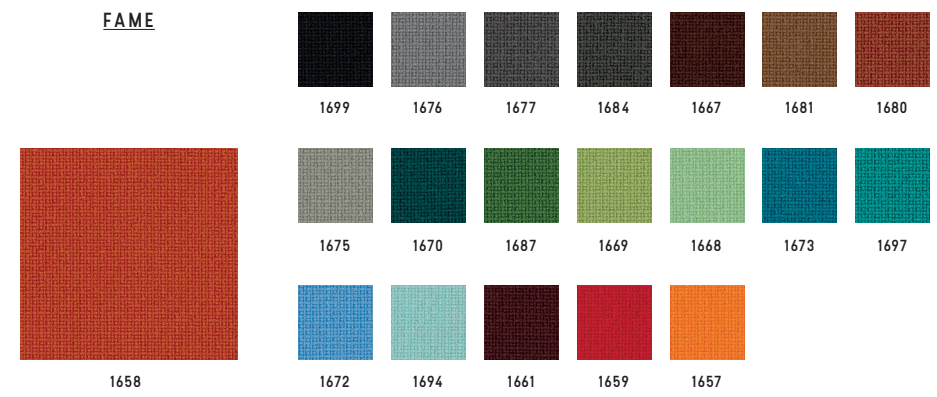


Categoria/ Category  
Composizione/ Composition  
Note/ Notes

C  
100% polyester  
100% recycled fabric



**FAME**



Categoria/ Category  
Composizione/ Composition

D  
95% New Zeland wool + 5% polyamide



**BREEZE FUSION**



Categoria/ Category  
Composizione/ Composition

K  
88% New Zeland wool + 12% polyamide





GABRIEL

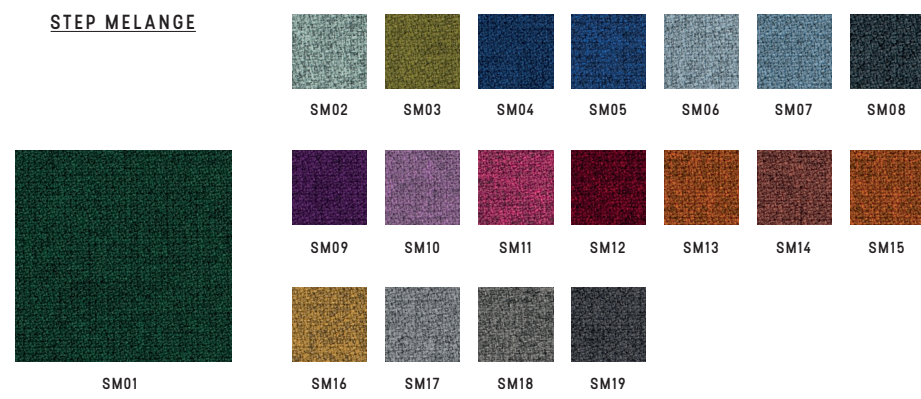
SAVOY



Categoria/ Category K  
Composizione/ Composition 100% Trevira CS



STEP MELANGE



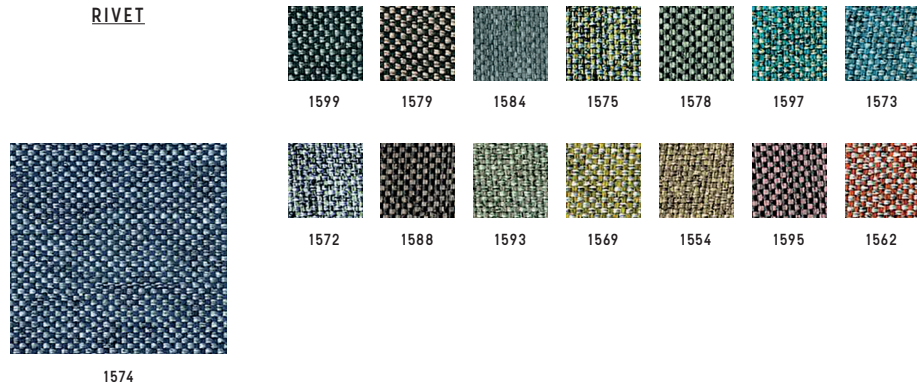
Categoria/ Category D  
Composizione/ Composition 100% Trevira CS





CAMIRA

RIVET



Categoria/ Category C  
 Composizione/ Composition 100% reprove  
 Note/ Notes 100% recycled fabric



KVADRAT

RELATE



Categoria/ Category D  
 Composizione/ Composition 100% trevira CS  
 Note/ Notes 100% recycled fabric



BLAZER



Categoria/ Category K  
 Composizione/ Composition 100% virgin wool



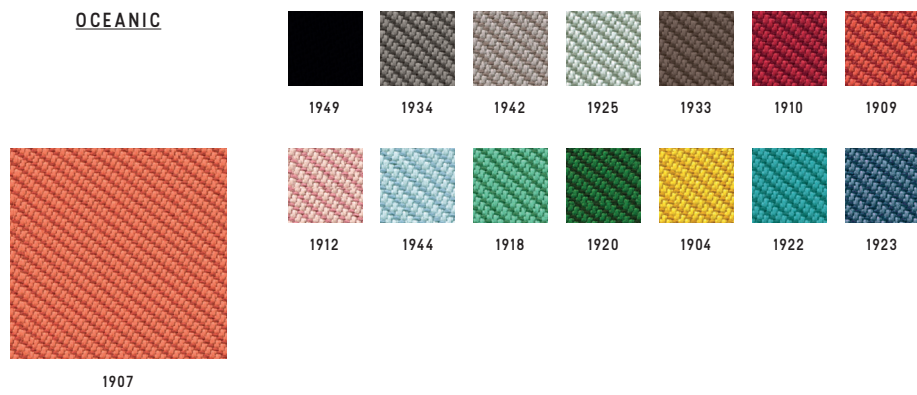
REMIX 3



Categoria/ Category K  
 Composizione/ Composition 90% new wool worsted + 10% nylon



OCEANIC



Categoria/ Category K  
 Composizione/ Composition 100% post-consumer recycled polyester, including 50% SEAQUAL yarn



RE-WOOL

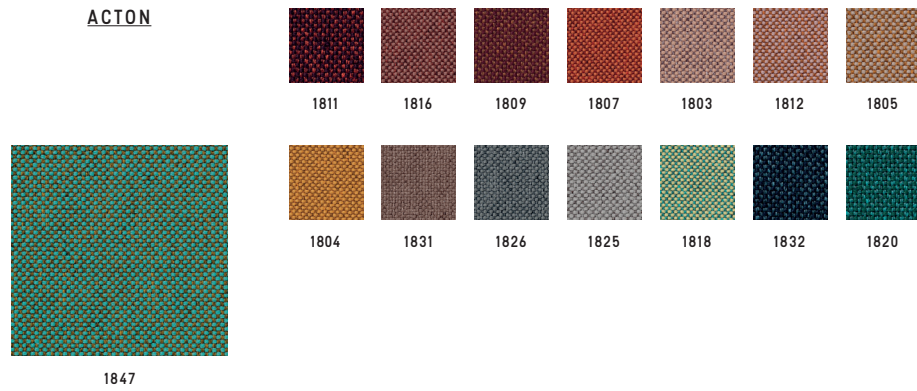


Categoria/ Category K  
 Composizione/ Composition 45% recycled wool + 45% new wool worsted + 10% nylon



**VESCOM**

**ACTON**



Categoria/ Category **D**  
 Composizione/ Composition 100% polyester



**LIMONTA**

**TRESIGALLO**



Categoria/ Category **K**  
 Composizione/ Composition 22% Acrylic + 22% wool + 22% polyester  
 13% cotton + 14% viscose + 17% wool



**G.S.**

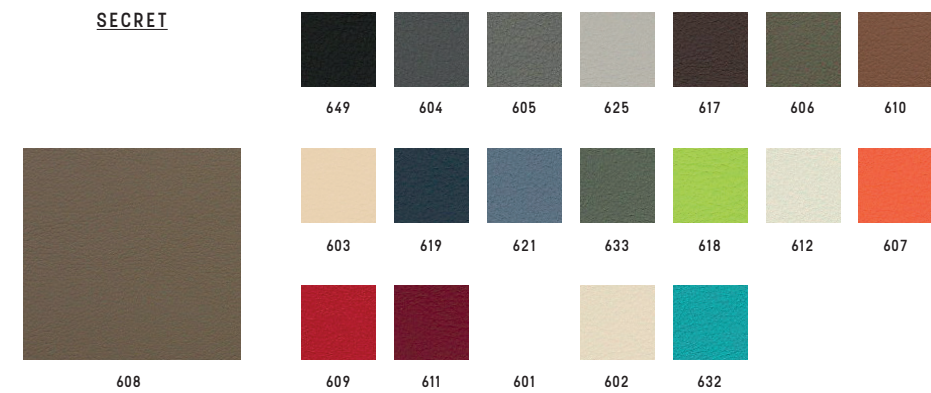
**SURROUND**



Categoria/ Category **B**  
 Composizione/ Composition 87,5% polyvinylchloride (PVC) + 12,5% cotton  
 Note/ Notes Antibacterial



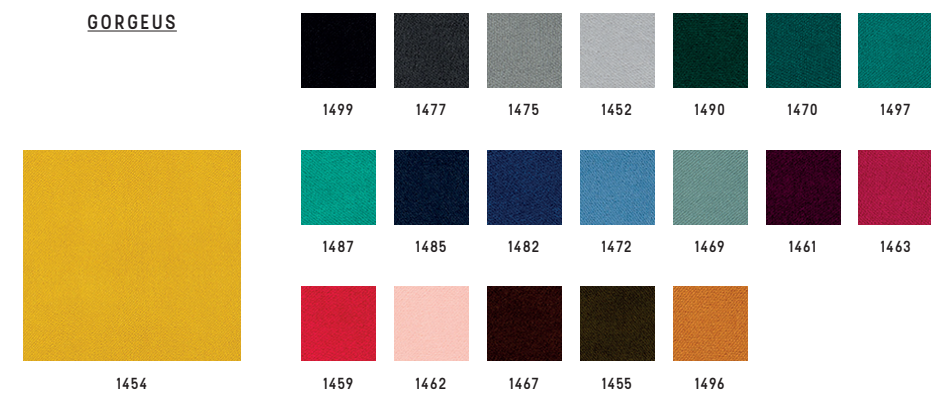
**SECRET**



Categoria/ Category **C**  
 Composizione/ Composition 76% polyvinylchloride (PVC) + 2% polyurethane (PU) + 22% polysulfone (PES)



**GORGEUS**



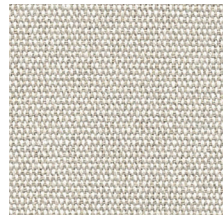
Categoria/ Category **D**  
 Composizione/ Composition 100% poliestere FR





**CHIOCCARELLO**

**DISCO COEX**



1402



1438 1428 1403 1443 1424 1447 1421



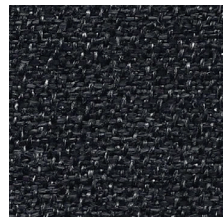
1441 1409

Categoria/ Category  
Composizione/ Composition

D  
70% cotton + 20% acrylic + 5% viscose  
5% linen, 0% formaldehyde



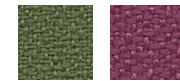
**EXPO**



1379



1399 1367 1377 1352 1366 1396 1394



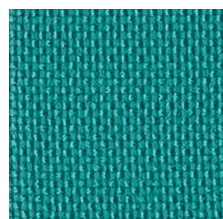
1369 1363

Categoria/ Category  
Composizione/ Composition  
Note/ Notes

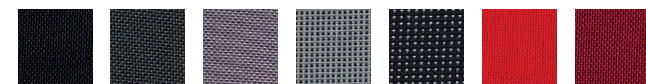
B  
100% propitex Fr bacteriostatic  
Bacteriostatic



**MADRID**



L097



L099 L077 L075 L088 L079 L059 L061



L060 L095 L067 L085 L074 L096 L082



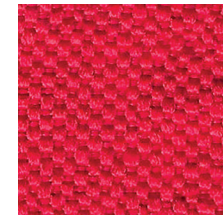
L073 L069 L054 L068 L087

Categoria/ Category  
Composizione/ Composition

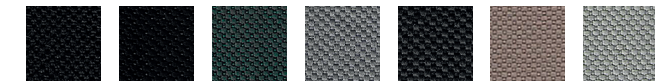
A  
100% polypropilene FR



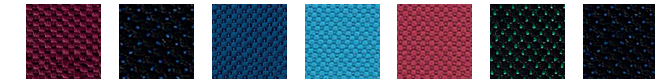
**SALÒ**



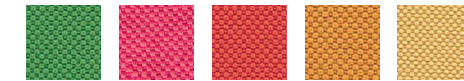
L259



L299 L298 L277 L275 L267 L281 L283



L289 L285 L282 L272 L260 L290 L287



L268 L262 L257 L256 L254

Categoria/ Category  
Composizione/ Composition

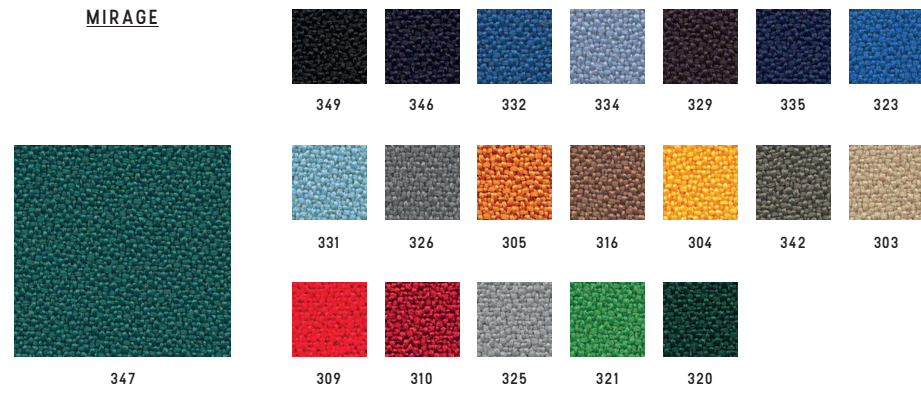
B  
100% polyester FR





**PUGI**

**MIRAGE**

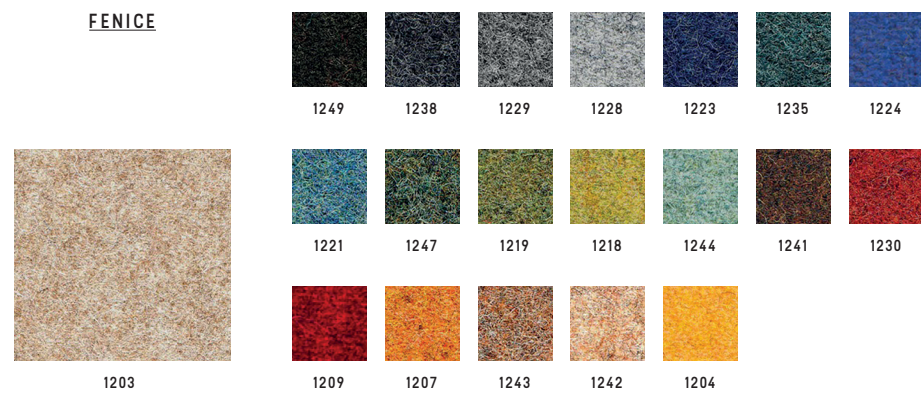


Categoria/ Category  
Composizione/ Composition

**B**  
100% polyester FR



**FENICE**



Categoria/ Category  
Composizione/ Composition

**C**  
75% wool + 25% polyamide



**BISENTIUM**



Categoria/ Category  
Composizione/ Composition

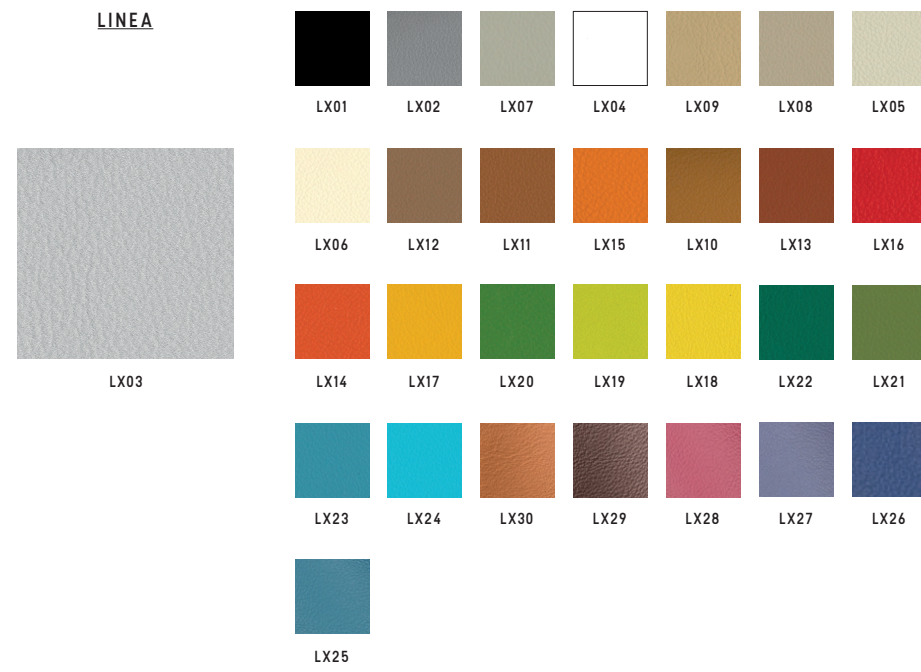
**K**  
30% wool + 28% polyester + 26% polyamide  
16% silk





**MASTROTTO**

**LINEA**

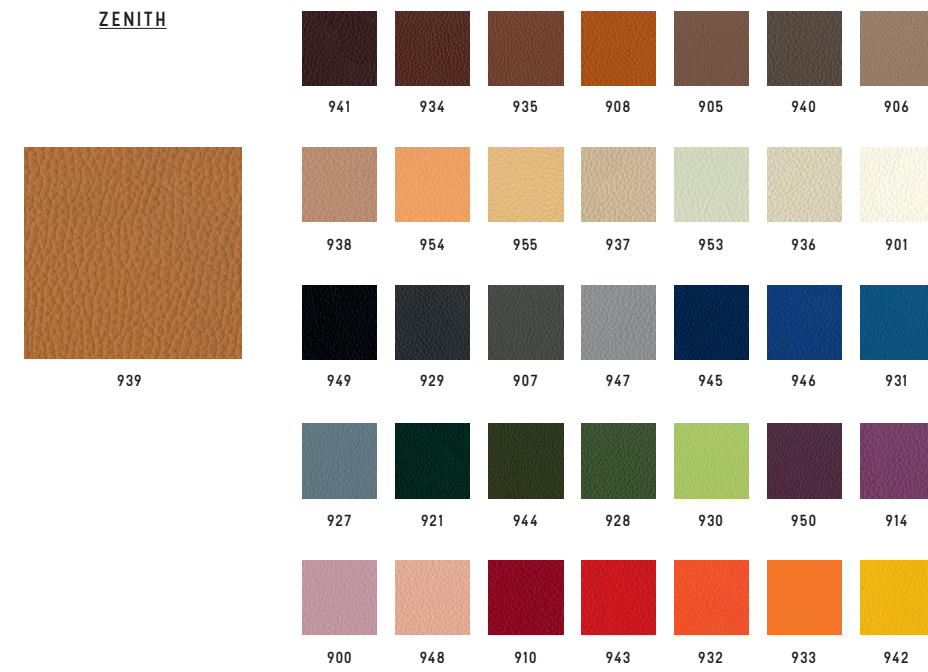


Categoria/ Category  
Composizione/ Composition

TOP (pieno fiore)  
Bovine leather



**ZENITH**



Categoria/ Category  
Composizione/ Composition

TP  
Bovine leather



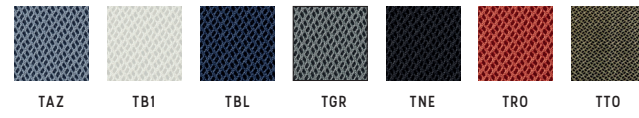




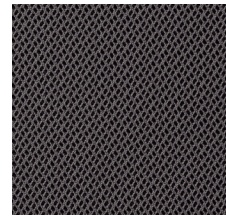


RETI TRIDIMENSIONALE

RHYTHM



TAZ TBI TBL TGR TNE TRO TTO



TAN

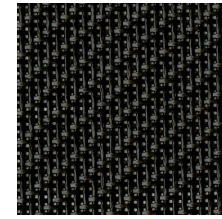


TVD

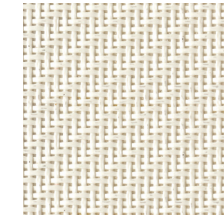
Categoria/ Category D  
 Composizione/ Composition 100% polyester



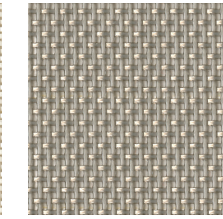
CATEGORIA L/  
 CATEGORY L



849



801

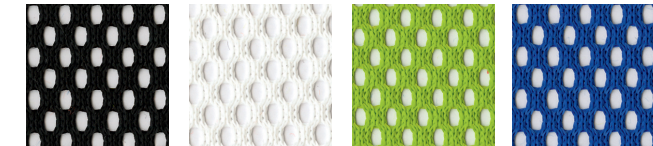


825

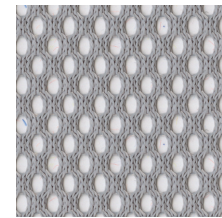
Categoria/ Category L  
 Composizione/ Composition 73% PVC + 27% poliestere/ 73% PVC + 27% polyester  
 849-801: Light, Nulite, Smartlight, Pop,  
 825: Light, Nulite



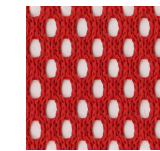
CATEGORIA R/  
 CATEGORY R



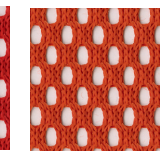
NE BI VD BL



GR



RO



AR

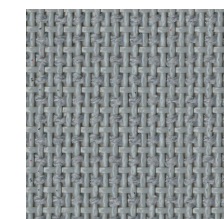
Categoria/ Category R  
 Composizione/ Composition 100% poliestere/ 100% polyester  
 Solo per Aire Jr, Post, Pop, Switch/  
 Only for Aire Jr, Post, Pop, Switch



CATEGORIA Z/  
 CATEGORY Z



NE



GR

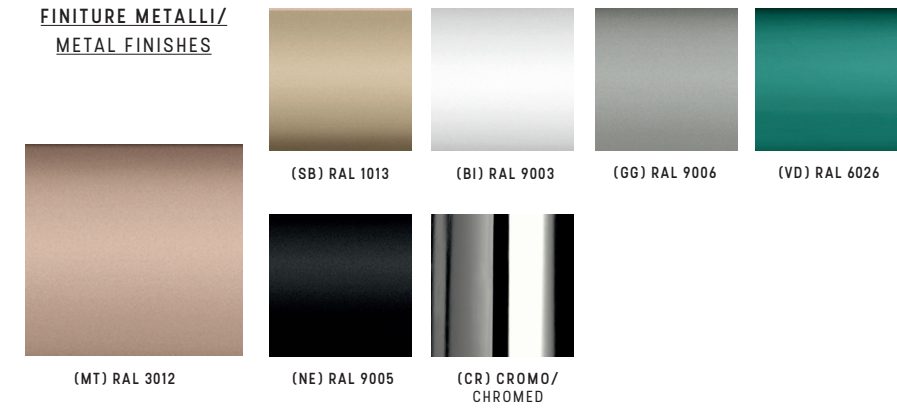
Categoria/ Category Z  
 Composizione/ Composition 60% PVC + 40% poliestere/ 60% PVC + 40% polyester  
 Solo per Overtime Evo, Extralight/  
 Only for Overtime Evo, Extralight







FINITURE METALLI/  
METAL FINISHES



Categoria/ Category

FE

PLASTICHE/  
PLASTICS



Categoria/ Category

PE

LEGNO/  
WOOD



Faggio/ Beech

Rovere/ Oak

Noce/ Walnut

Wenge'

Standard

A progetto/ For customized projects

Categoria/ Category  
Composizione/ Composition

LE

Legno massello di faggio in colore naturale/ Solid beech wood natural finish.  
Legno massello di rovere con verniciatura di tipo acrilico in vari colori/ Solid oak wood natural finishes.



